

Martin Cook



UNIVERSITY
OF
JOHANNESBURG

MCAS

Manoeuvring Characteristics Augmentation System



737 Original



737 Classic

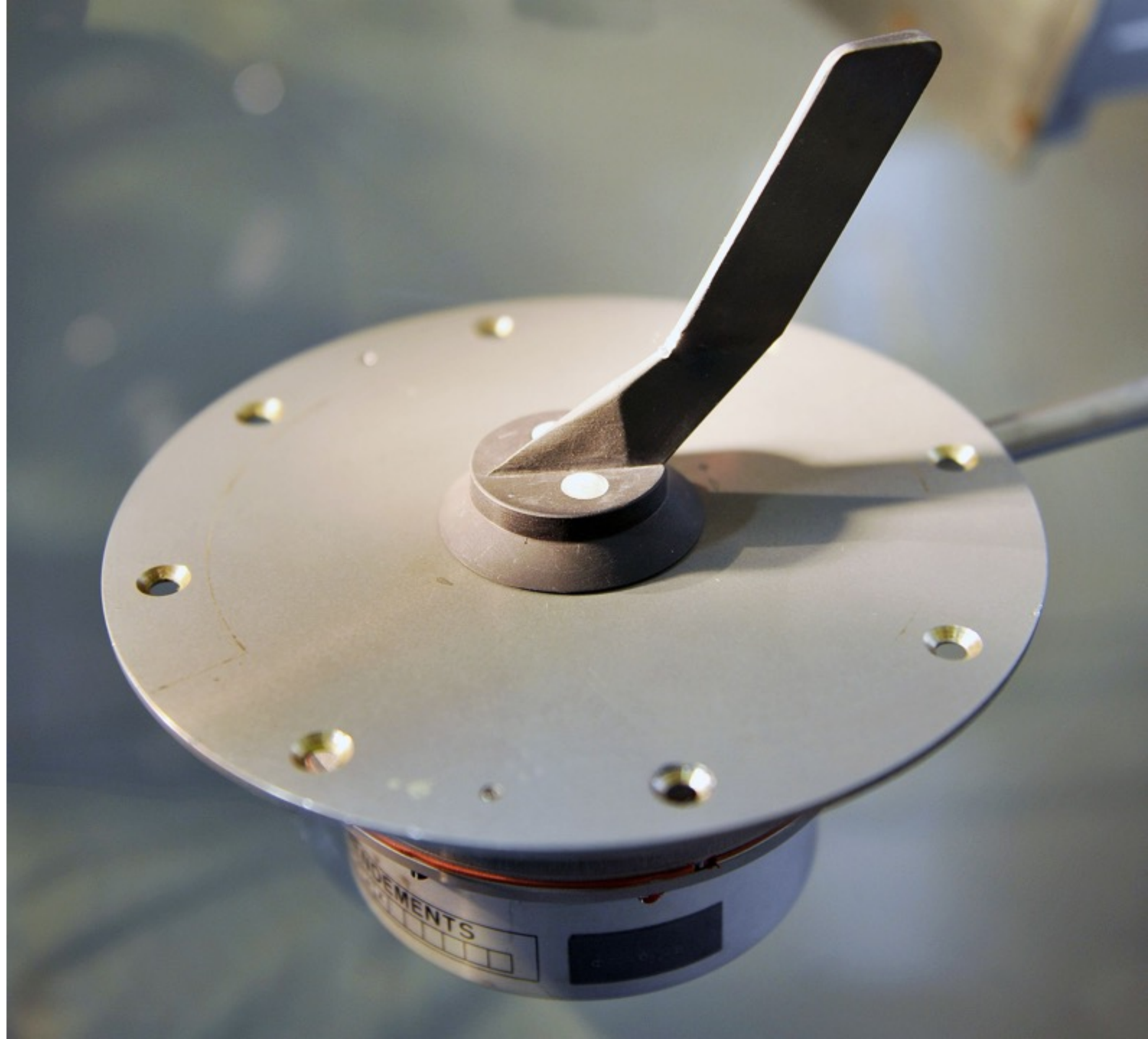


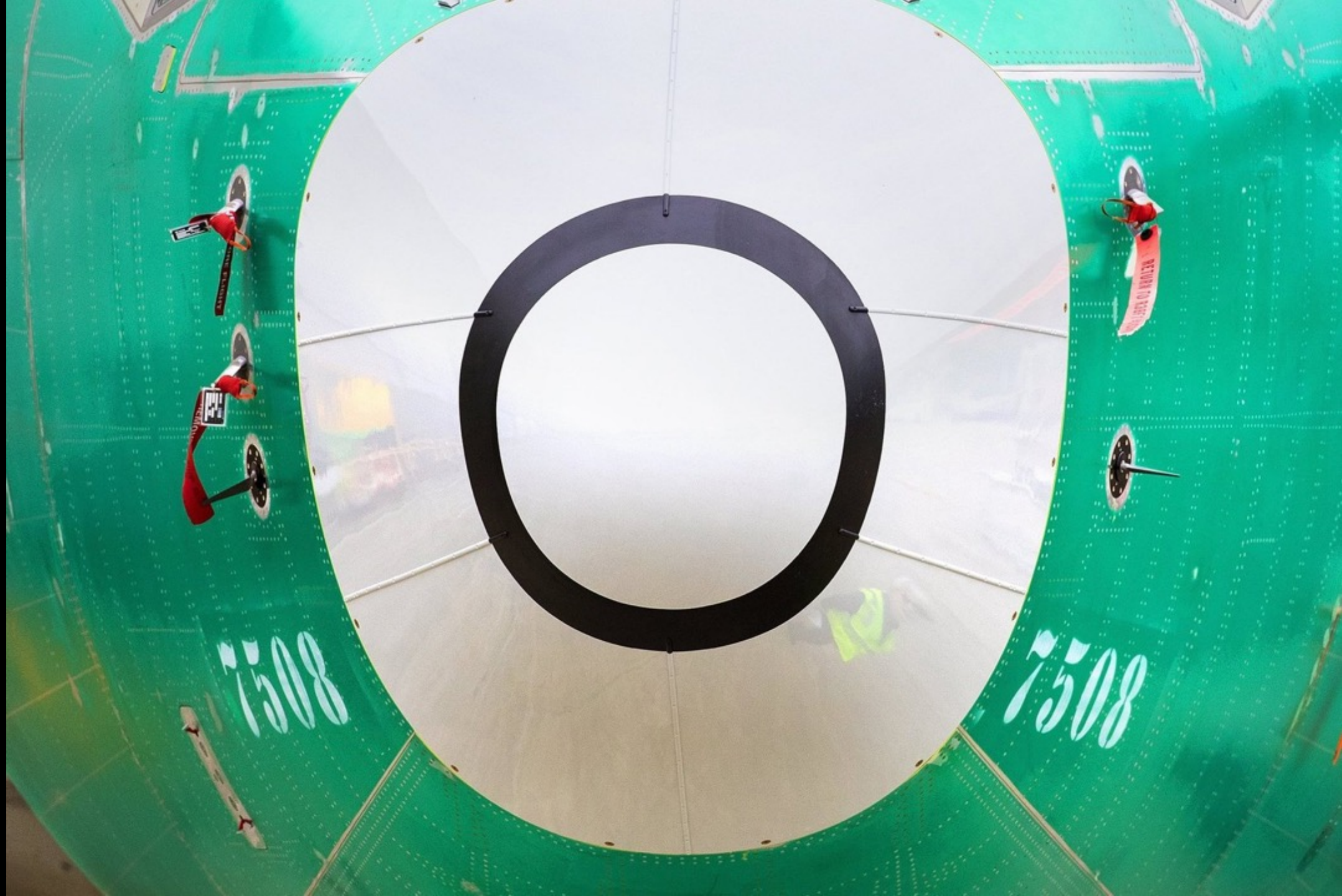
737 Next Generation



737 MAX

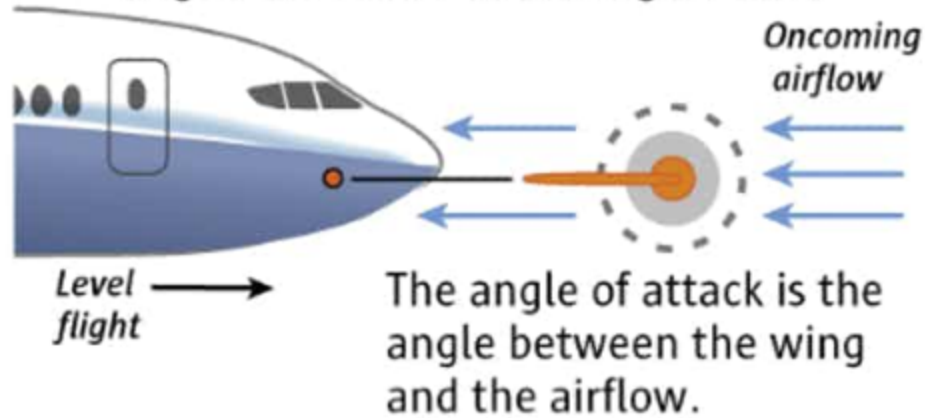
Angle-of-attack
sensor



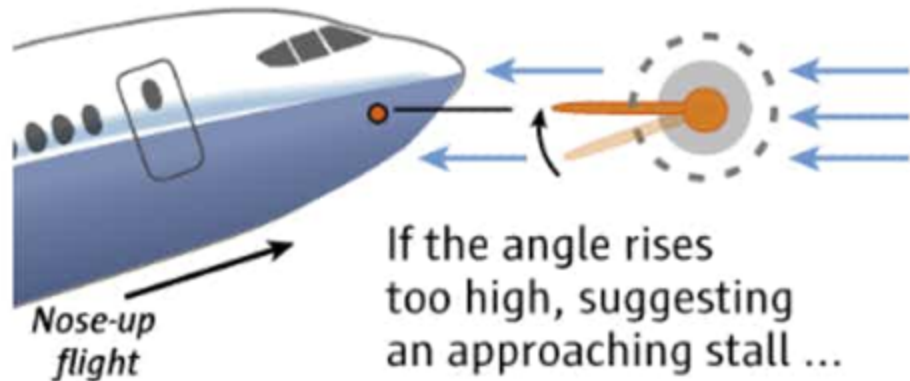


How the MCAS (Maneuvering Characteristics Augmentation System) works on the 737 MAX

1. The angle-of-attack sensor aligns itself with oncoming airflow.



2. Data from the sensor is sent to the flight computer.



... the **MCAS** activates.

3. MCAS automatically swivels the **horizontal tail** to lift the plane's tail while moving the nose down.



Horizontal tail

In the Lion Air crash, the angle-of-attack sensor fed false information to the flight computer.

Sources: Boeing, FAA, Indonesia National Transportation Safety Committee, Leeham.net, and The Air Current

Reporting by DOMINIC GATES,
Graphic by MARK NOWLIN / THE SEATTLE TIMES



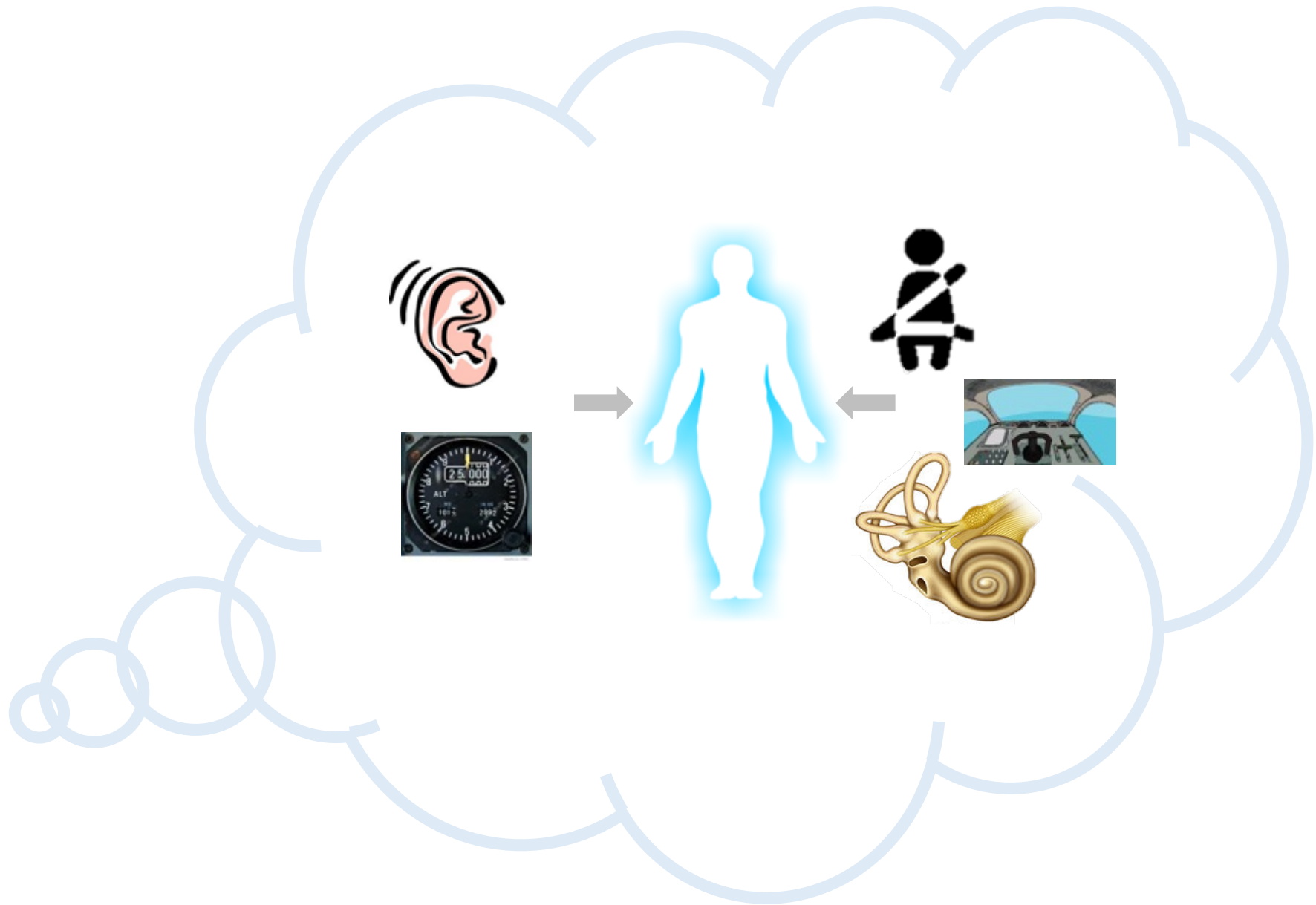
Individualistic

3rd industrial
revolution













New paradigm: the only role of sensors is to ensure that your digital twin is in synch with reality.

New paradigm: the only role of sensors is to ensure that your digital twin is in synch with reality.

With so much data from so many sources, it is inevitable that you will have disagreements. Measurement error and failure have to be baked into a digital twin.

New paradigm: the only role of sensors is to ensure that your digital twin is in synch with reality.

With so much data from so many sources, it is inevitable that you will have disagreements. Measurement error and failure have to be baked into a digital twin.

Ubuntu of data. The identity of information is from the community of information.

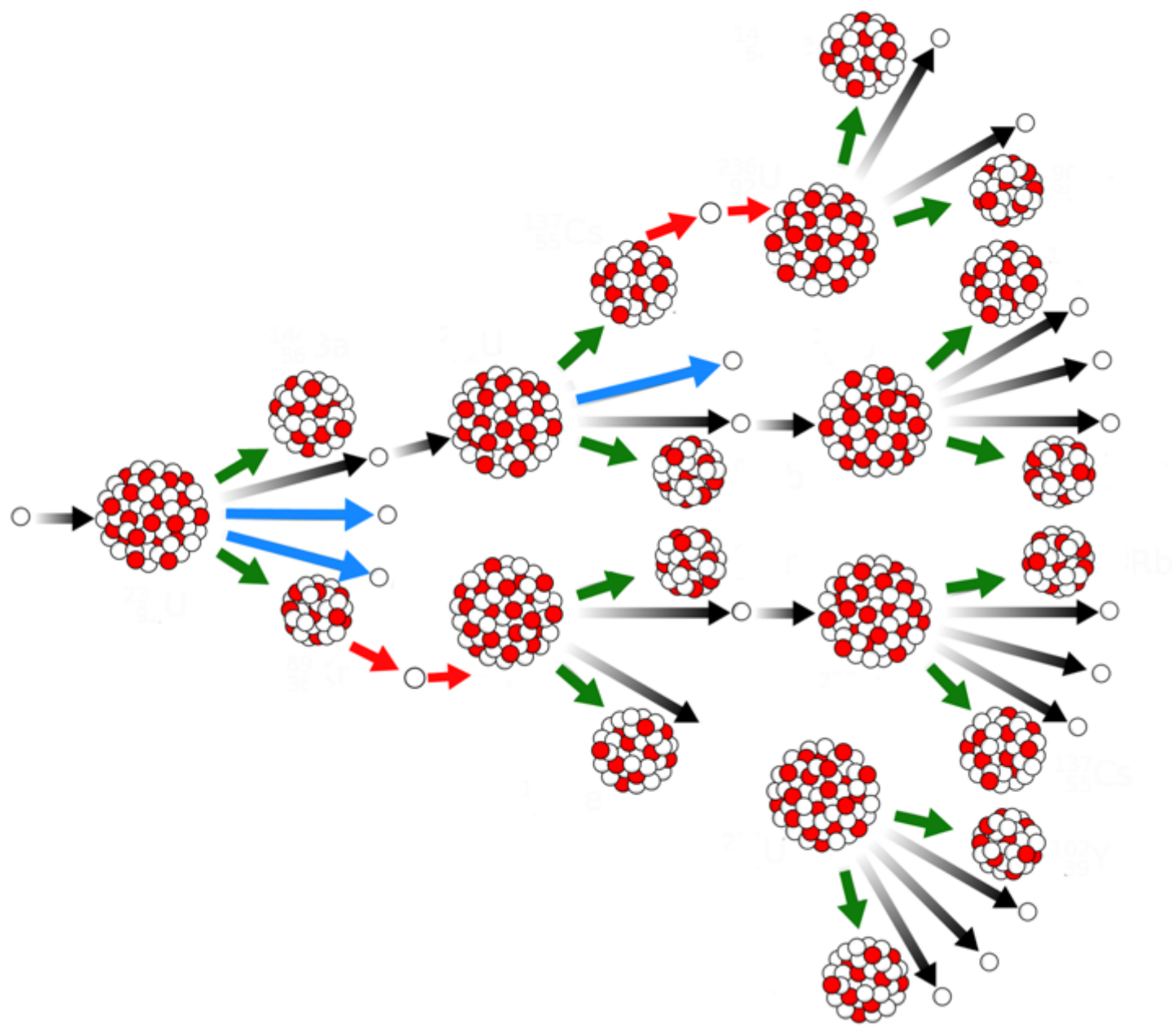
New paradigm: the only role of sensors is to ensure that your digital twin is in synch with reality.

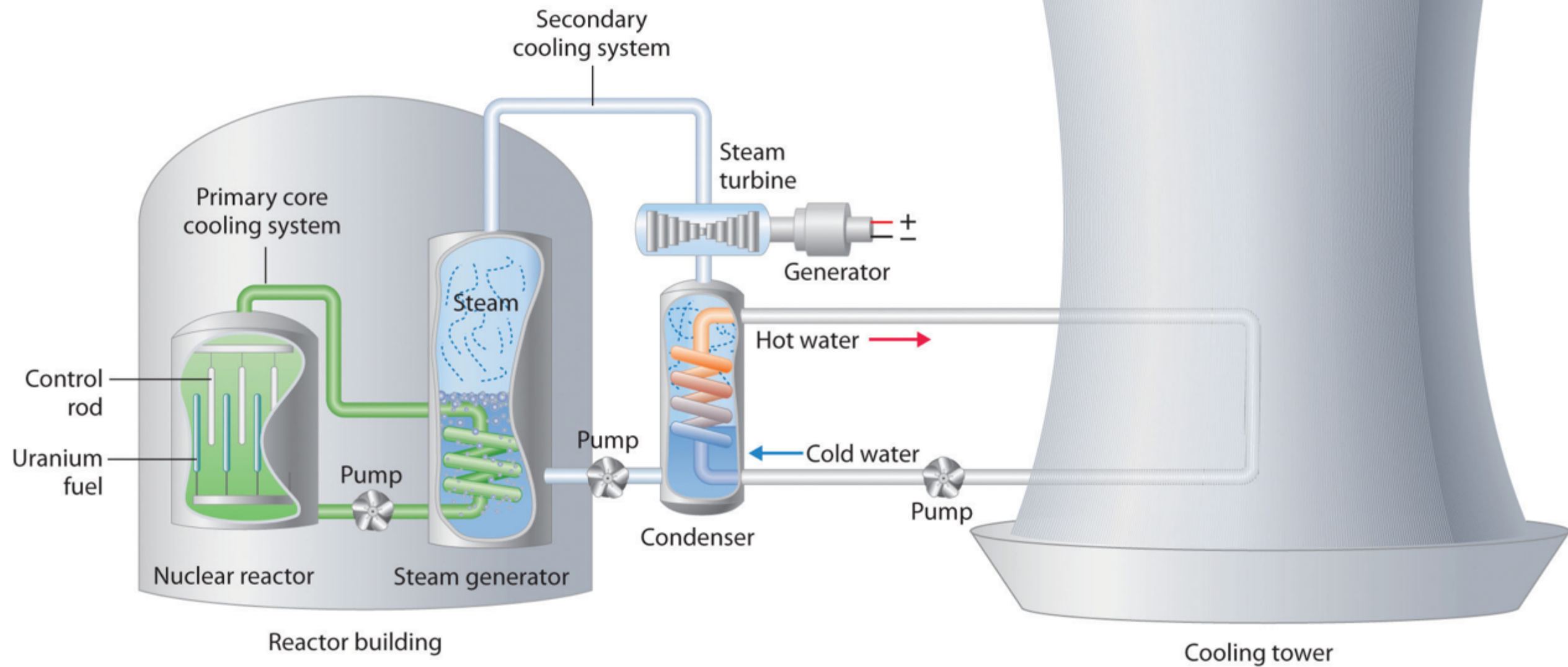
With so much data from so many sources, it is inevitable that you will have disagreements. Measurement error and failure have to be baked into a digital twin.

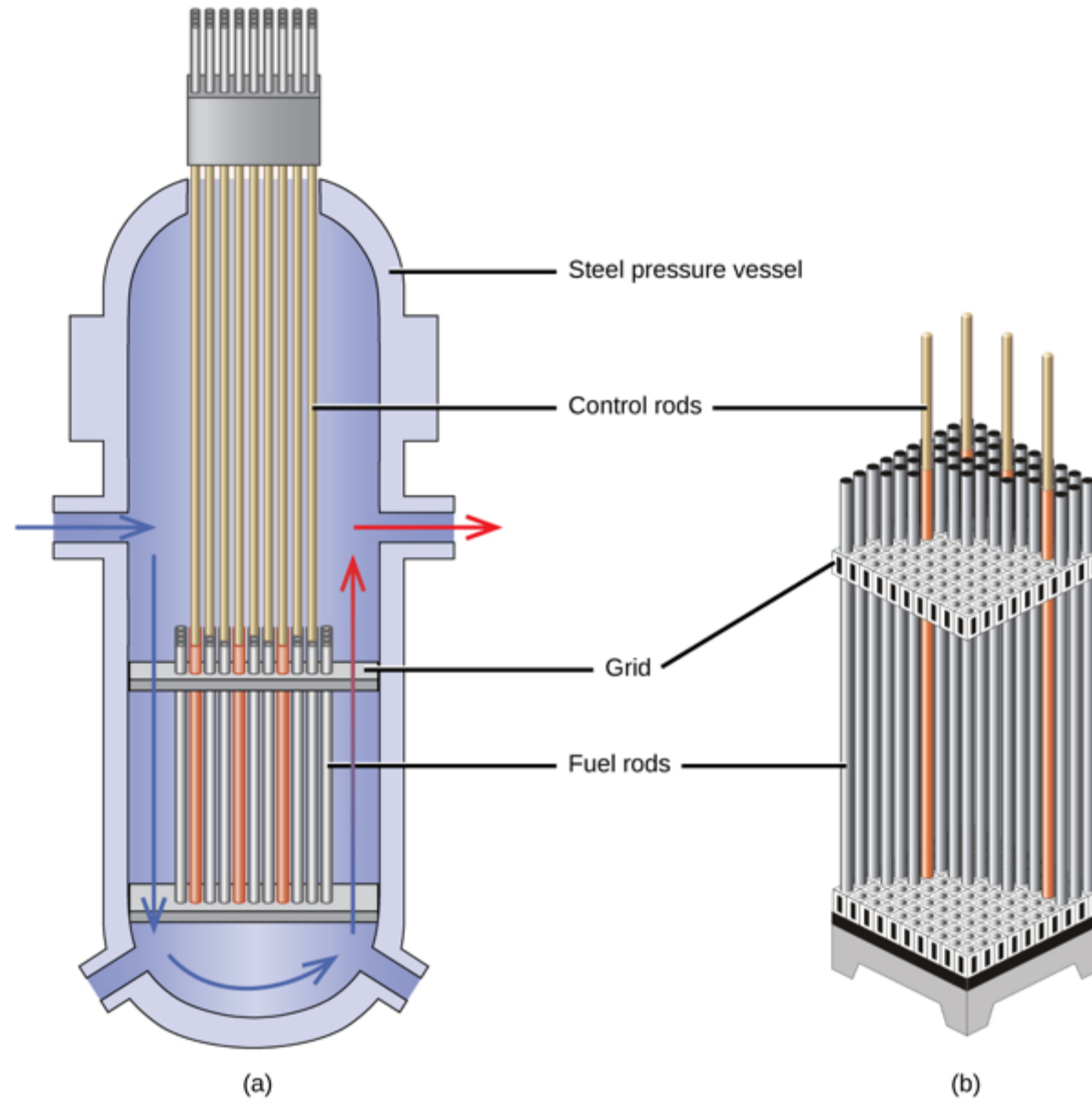
Ubuntu of data. The identity of information is from the community of information.

MCAS: don't ask the angle-of-attack sensor. Ask the digital twin.

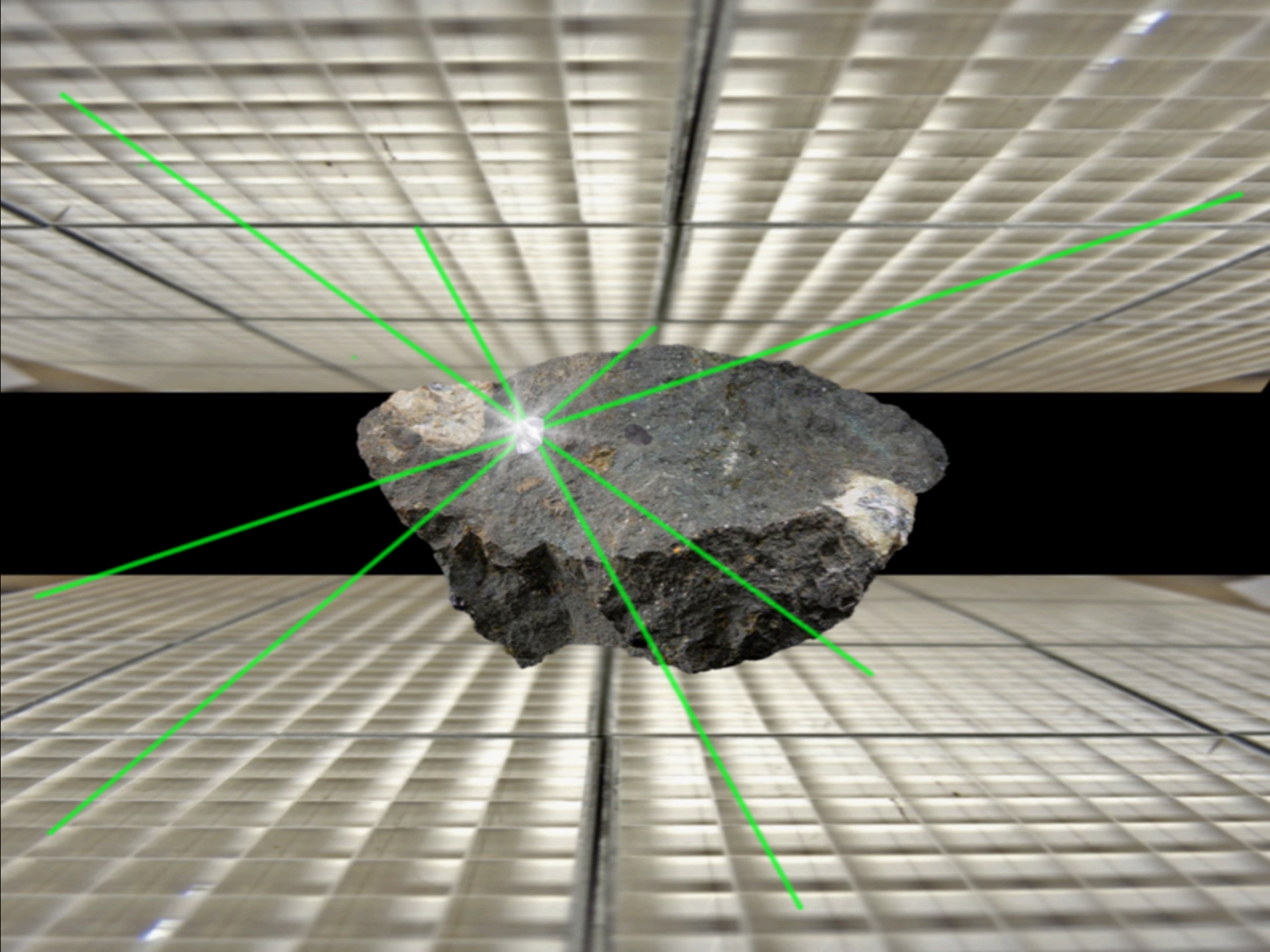


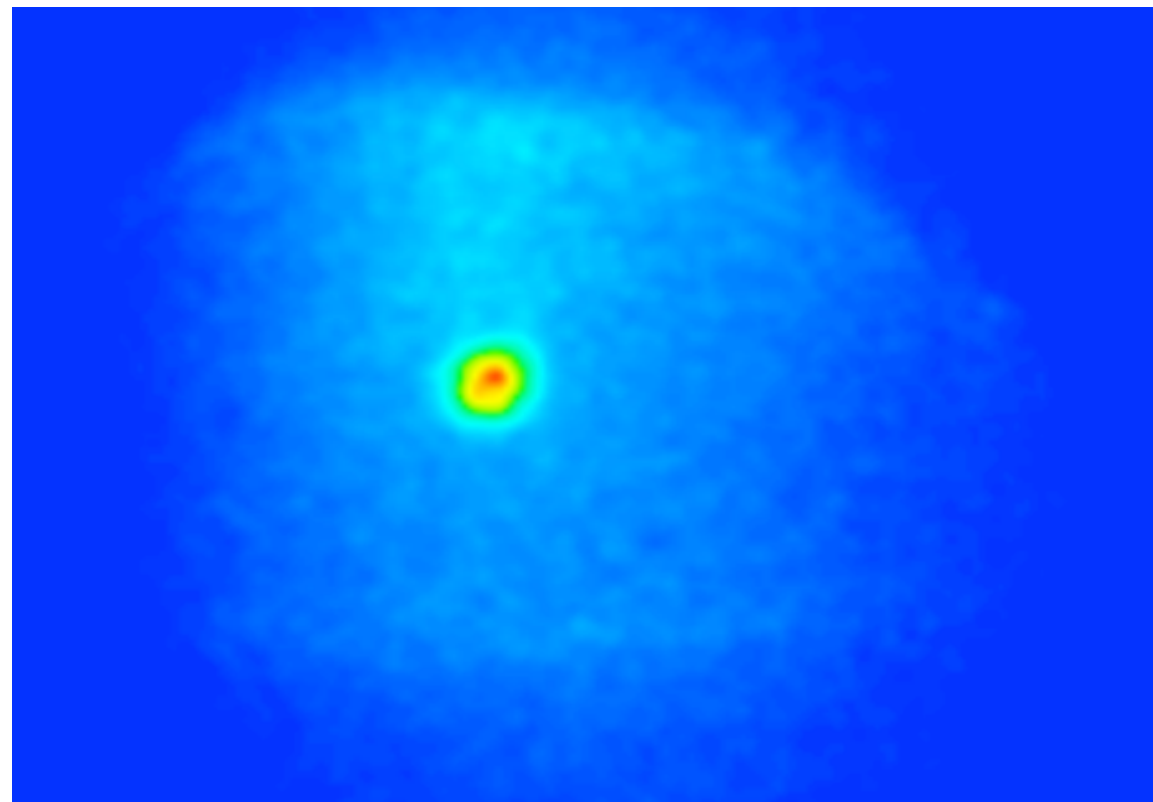




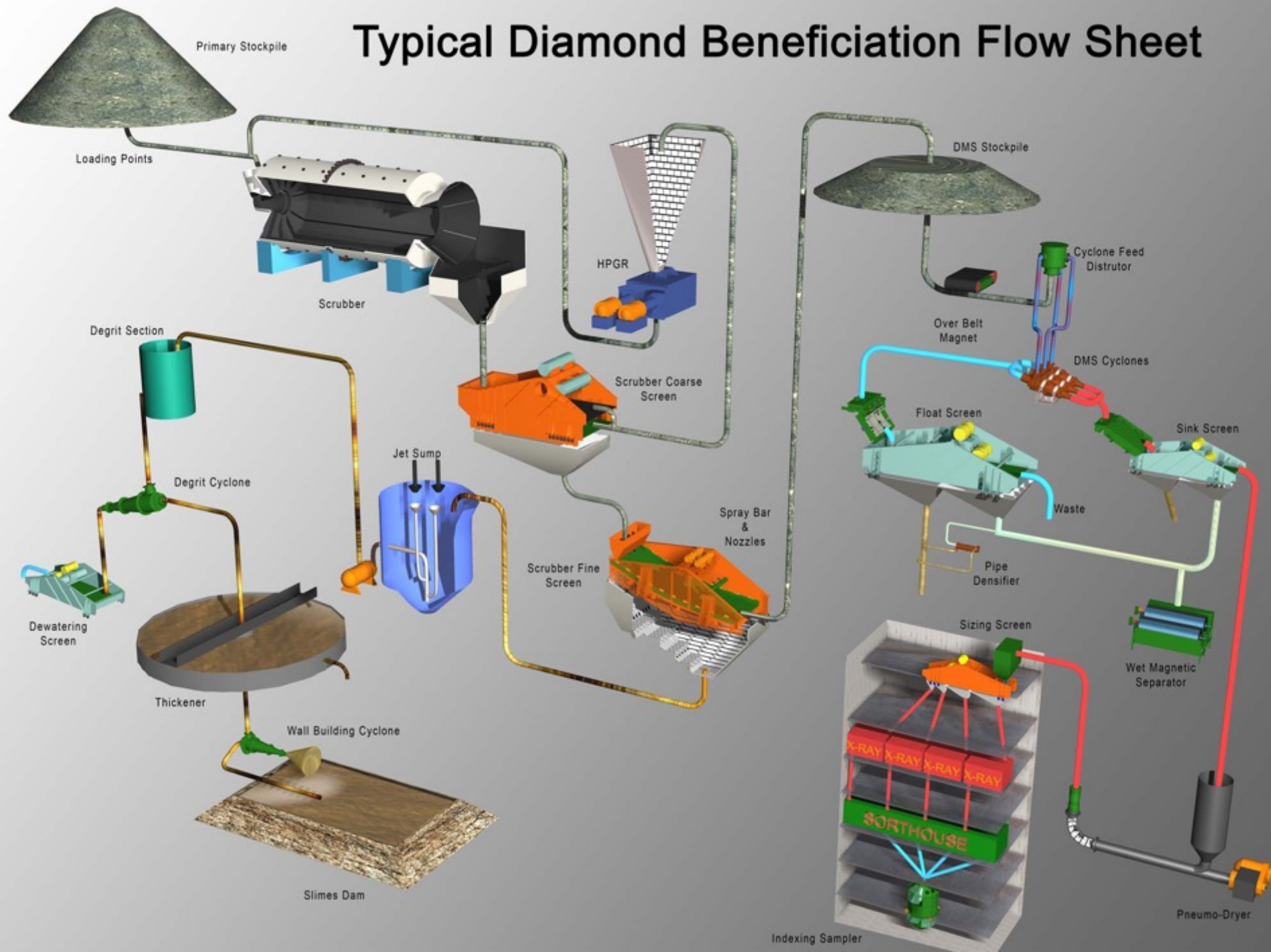








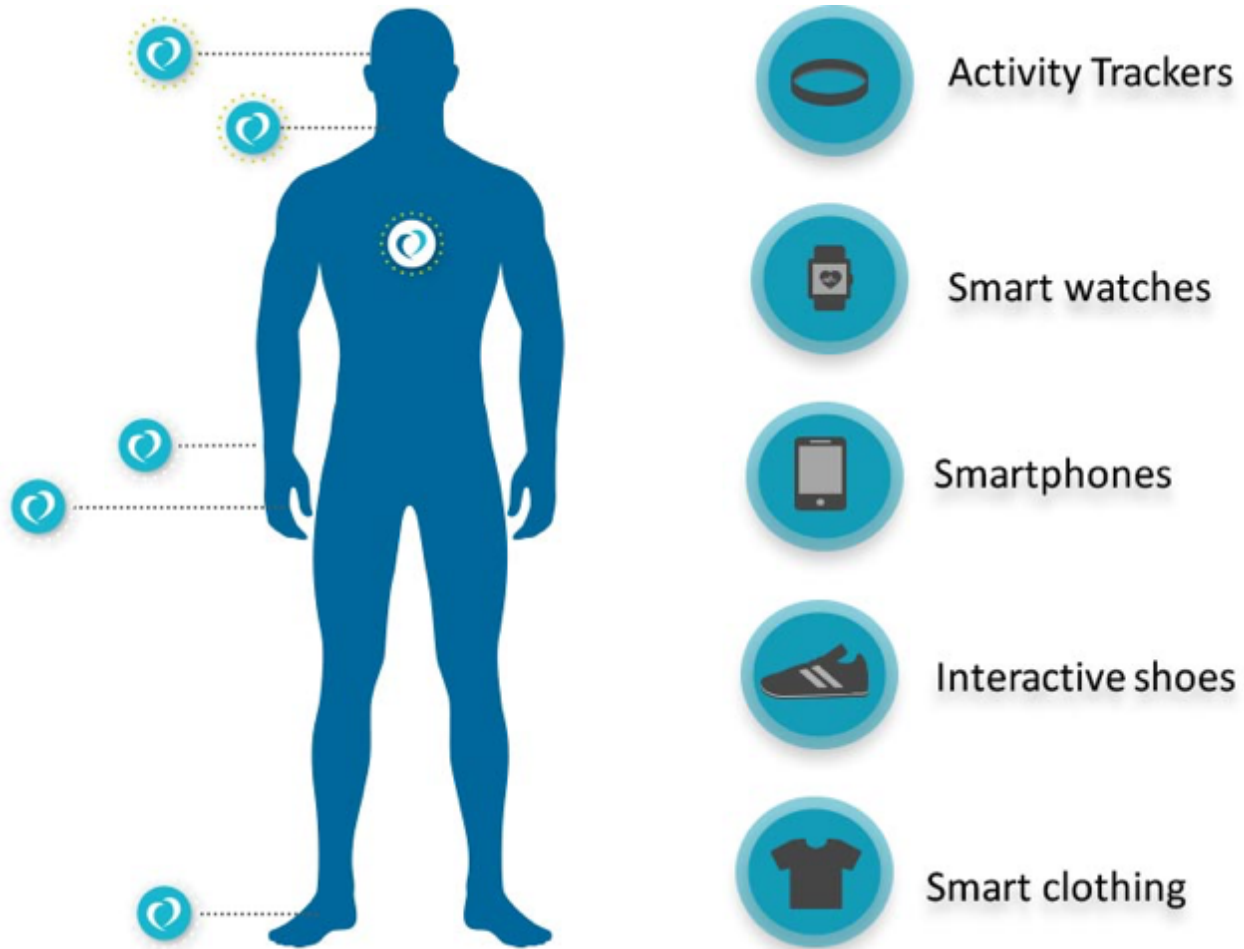
Typical Diamond Beneficiation Flow Sheet



What's next?



What's next?



What's next?

