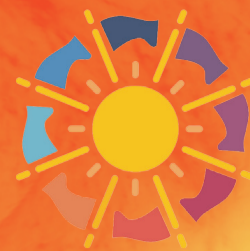




SYNCHRONISED WITH THE INTERNATIONAL YEAR OF LIGHT



# THE AFRICAN LIGHT SOURCE CONFERENCE AND WORKSHOP

16 - 20 NOVEMBER 2015, ESRF GRENOBLE FRANCE



THE AFRICAN LIGHT SOURCE CONFERENCE  
AND WORKSHOP IS OPEN TO AFRICAN SCIENTISTS,  
COLLEAGUES, STUDENTS WHO HAVE UTILISED  
LIGHT SOURCES, AND FRIENDS OF AFRICA WHO  
SUPPORT THE VISION FOR AN  
AFRICAN LIGHT SOURCE.

## Conference: African Synchrotron Science

The Workshop will review the status of the African User Base at international light sources.

- ▶ Presentations of African research at Light Sources.
- ▶ Presentations of highlights and status globally.

## Workshop: Strategy and Policy

- ▶ Discussions on a Light Source Roadmap for Africa.
- ▶ Visit and insights to an operational international light source.
- ▶ Election of the new, fully mandated Steering Committee for the African Light Source.
- ▶ Dissolution of the Interim Committee.

## Conference Secretariat:

- Conference Web Page: [www.saip.org.za/AfLS2015/](http://www.saip.org.za/AfLS2015/)
- SAIP Conference Organisation: [afls2015@saip.org.za](mailto:afls2015@saip.org.za)
- ESRF Conference Liaison: [afls2015@esrf.fr](mailto:afls2015@esrf.fr)

Web Page of the Interim Steering Committee of the African Light Source:  
[www.africanlightsource.org](http://www.africanlightsource.org)

## ORGANISING COMMITTEE:

Simon Connell (Chair)  
Tabbetha Dobbins  
Brian Masara  
Sekazi Mtingwa  
Romain Murenzi  
Tshepo Ntsoane  
Francesco Sette  
Ahmadou Wagué  
Herman Winick  
Mohammad S. Yousef

University of Johannesburg, SA  
Rowan University, USA  
SA Institute of Physics, SA (Zimbabwean)  
TriSEED Consultants, USA  
Exec Dir of TWAS, Rwanda  
Necsa, SA  
ESRF, Europe  
Université Cheikh Anta Diop, Senegal  
SSRL, SLAC National Accelerator Laboratory, USA  
Cairo University, Egypt

## MEMBERS:

The Interim Steering Committee of the African Light Source

Simon Connell (Chair)  
Tabbetha Dobbins  
Jonathan Dorfan  
Ken Evans-Lutterodt  
Tarek Hussein  
Brian Masara (Exec)  
Fetene Masresha  
Krystle J. McLaughlin  
Sekazi Mtingwa (Exec)  
Romain Murenzi  
Lawrence Norris  
Tshepo Ntsoane (Exec)  
Philip Oladijo  
Esna du Plessis  
Kennedy Reed  
Francesco Sette (Exec)  
Ahmadou Wagué (Exec)  
Sverker Werin  
Herman Winick  
Mohammad S. Yousef (Exec)

University of Johannesburg, SA  
Rowan University, USA  
OIST, Japan  
BNL, USA (Ghanaian)  
Cairo University, Egypt  
SA Institute of Physics, SA (Zimbabwean)  
Ethiopian Academy of Sciences, Ethiopia  
Lehigh University, USA  
TriSEED Consultants, USA  
Exec Dir of TWAS, Rwanda  
NSBP, USA  
Necsa, SA  
Int. U. of Sci. and Tech., Botswana (Nigerian)  
SASOL, SA  
LLNL, USA  
ESRF, Europe  
Université Cheikh Anta Diop, Senegal  
MAX IV, Sweden  
SSRL, SLAC National Accelerator Laboratory, USA  
Cairo University, Egypt